

Figure S1

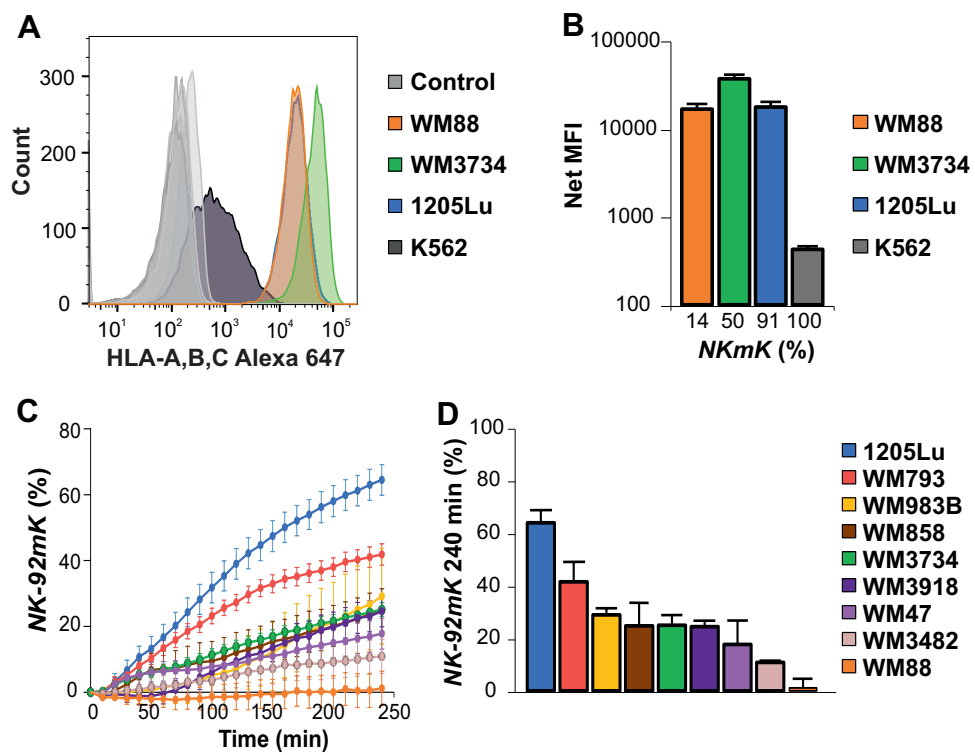
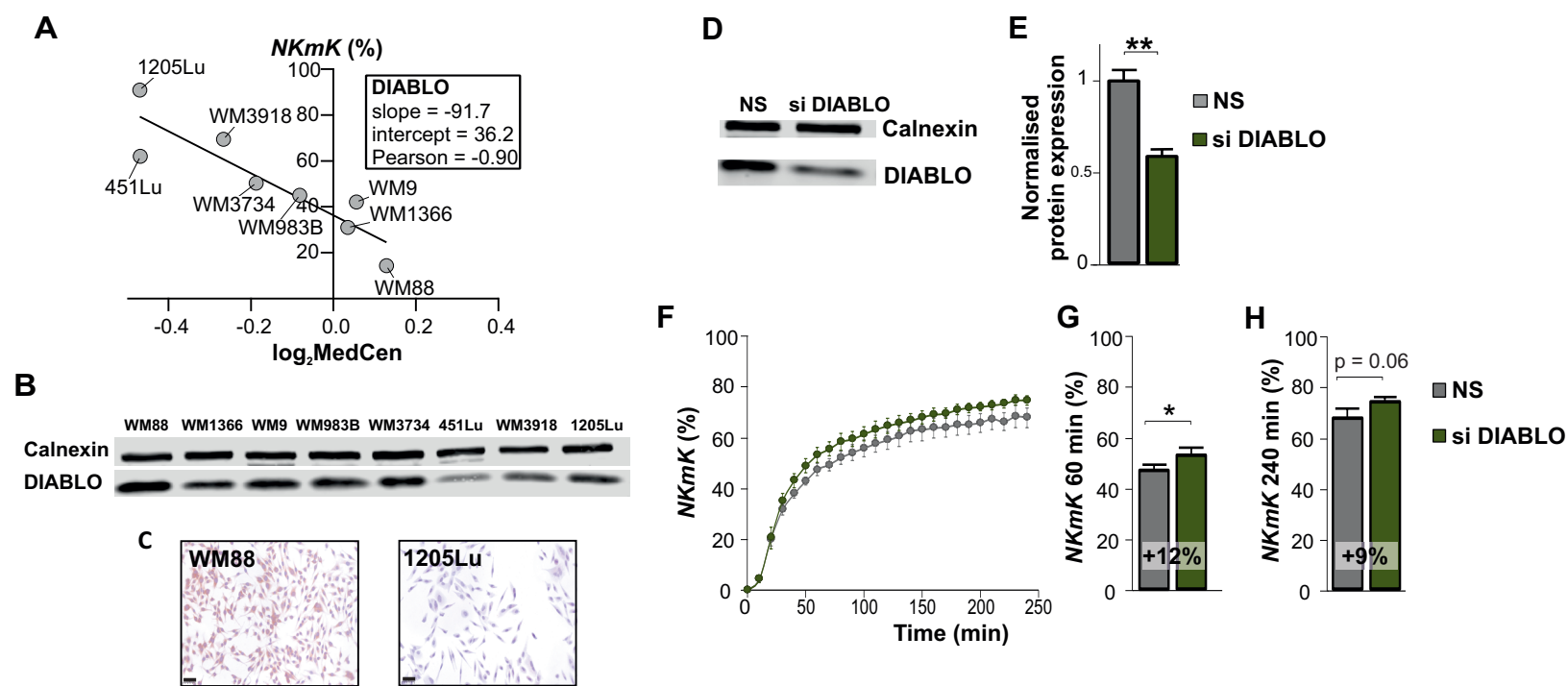


Figure S2



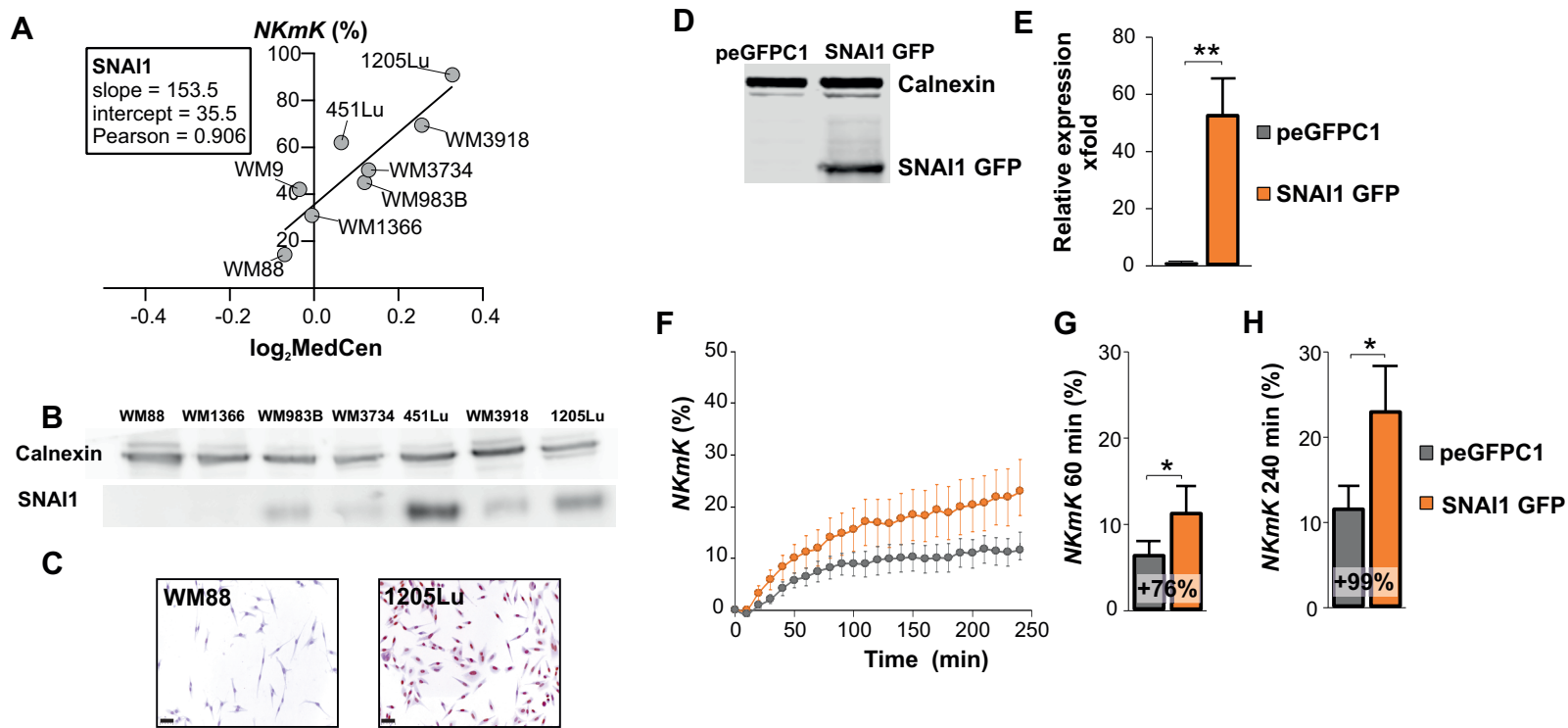
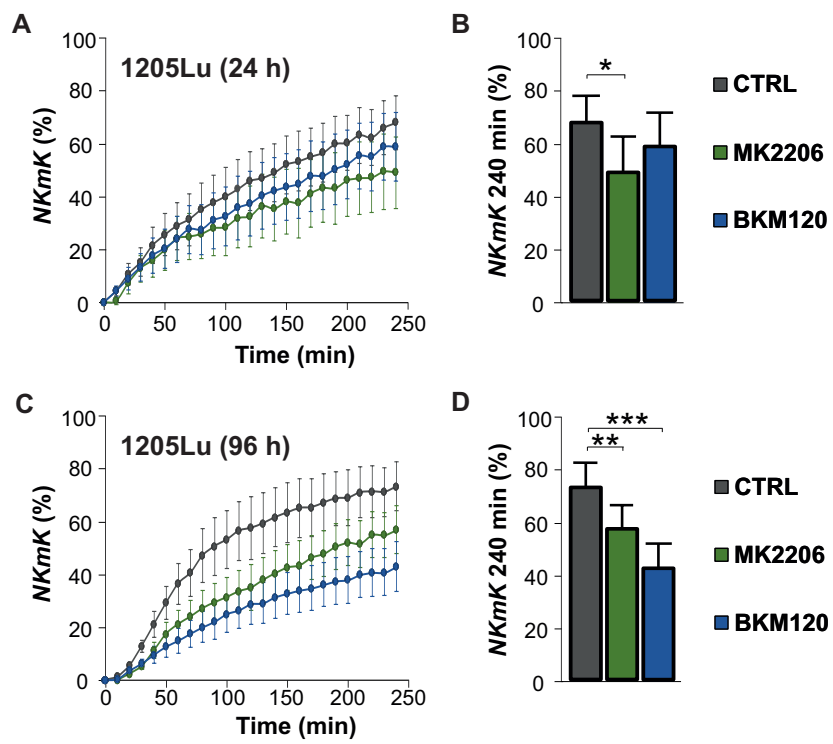


Figure S4



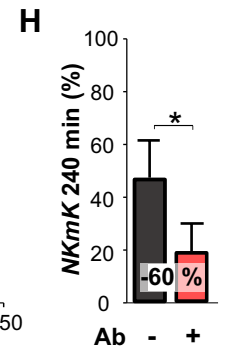
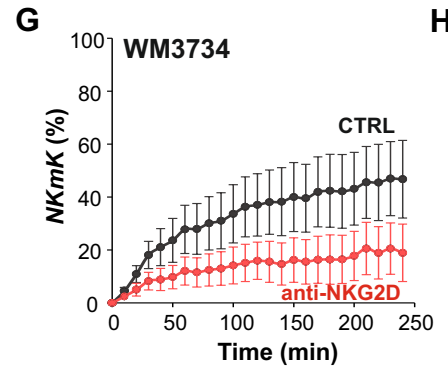
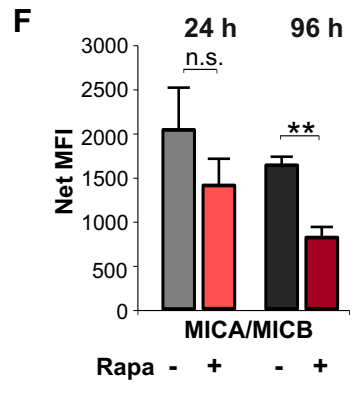
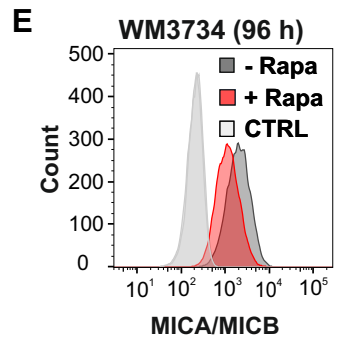
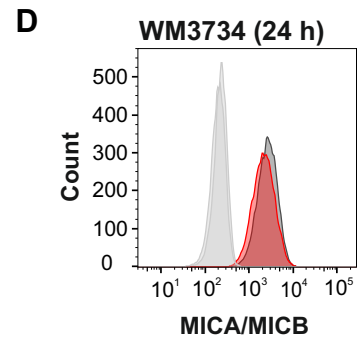
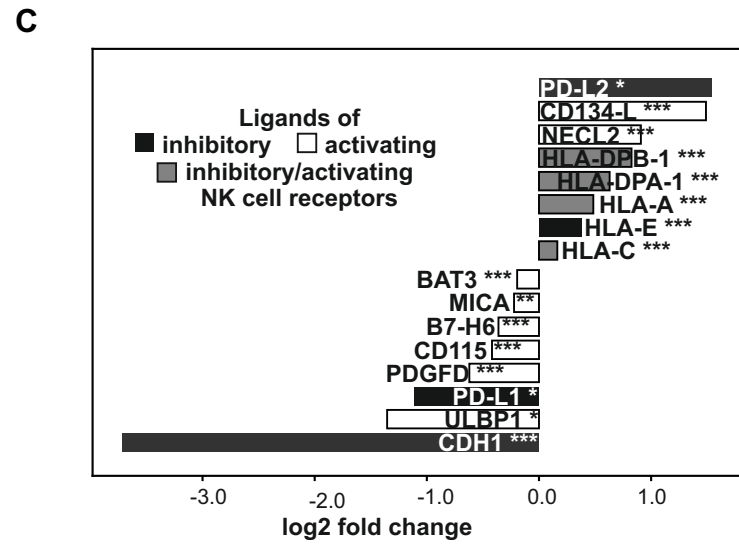
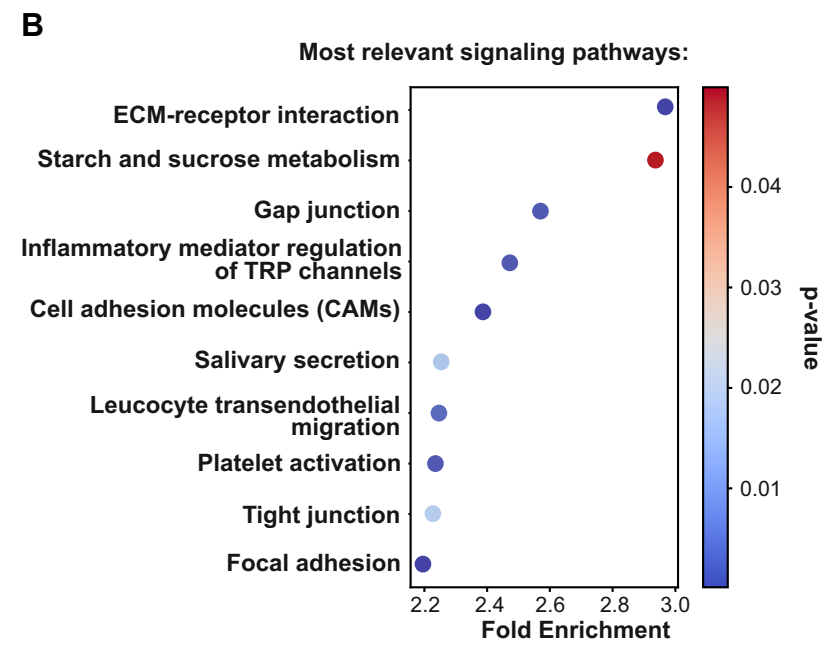
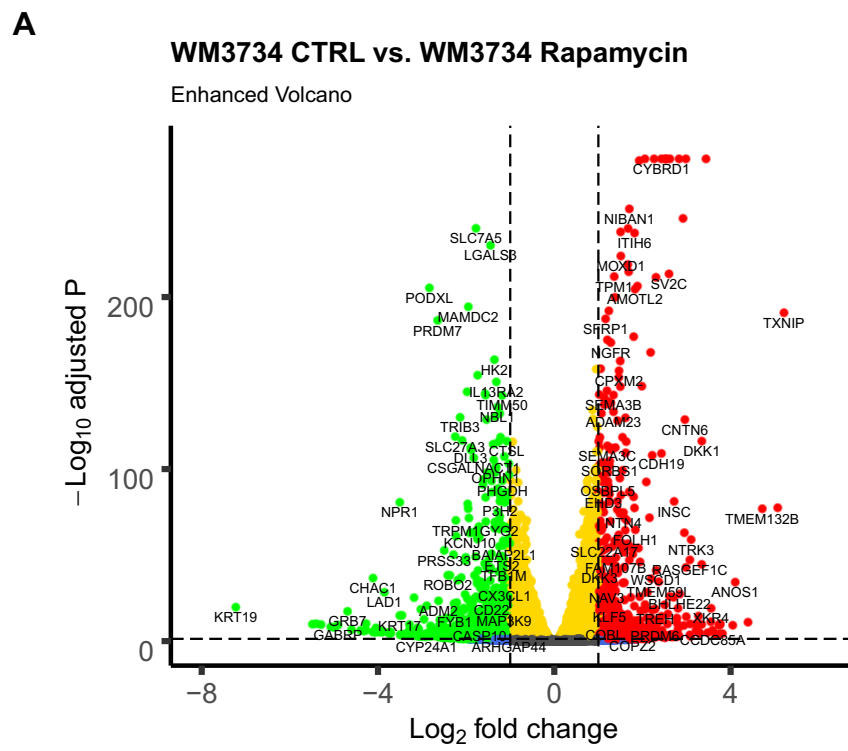
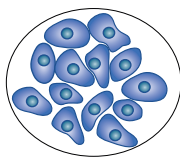


Figure S6

A

Non-treated  
WM3734AIMV medium  
containing

①. Pre-incubation

②. Stimulants during  
the killing assay

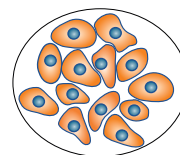
DRUGS

Rapamycin

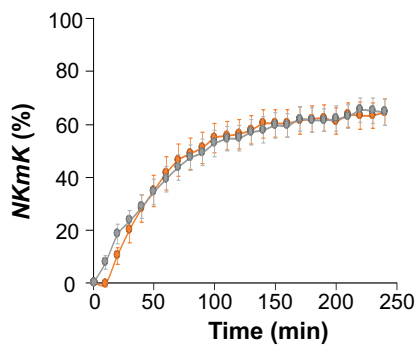
MK2206

BKM120

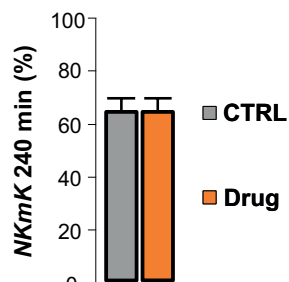
DMSO

Drug treated  
WM3734AIMV medium  
containing

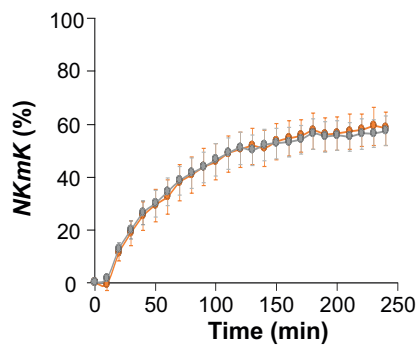
B



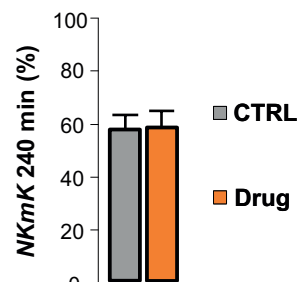
C



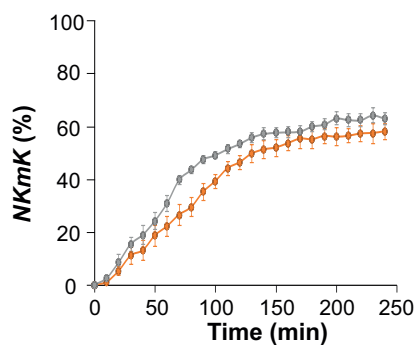
D



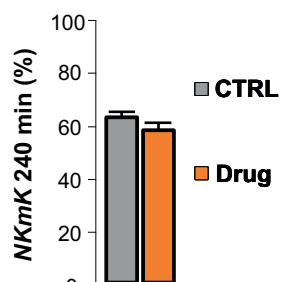
E



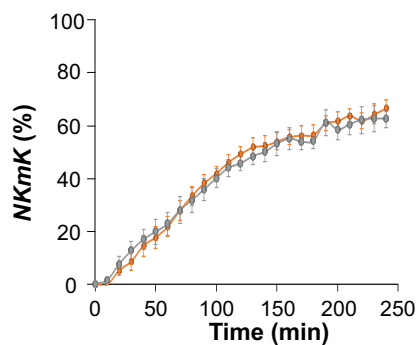
F



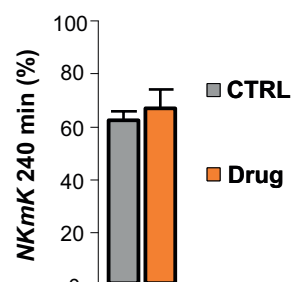
G



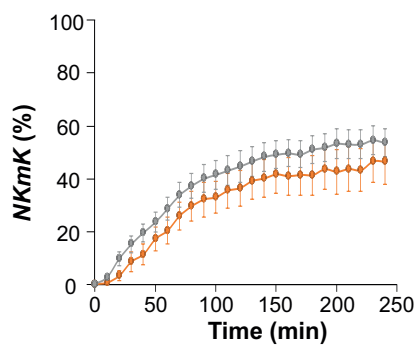
H



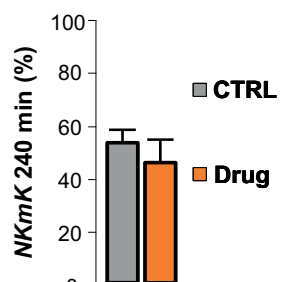
I



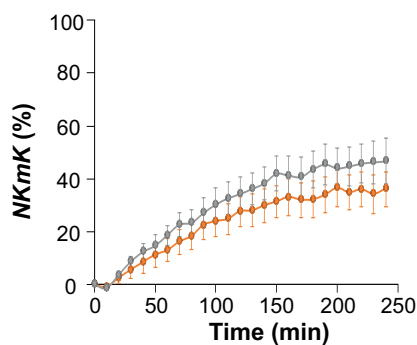
J



K



L



M

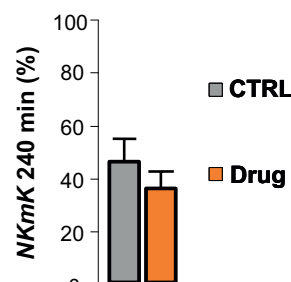
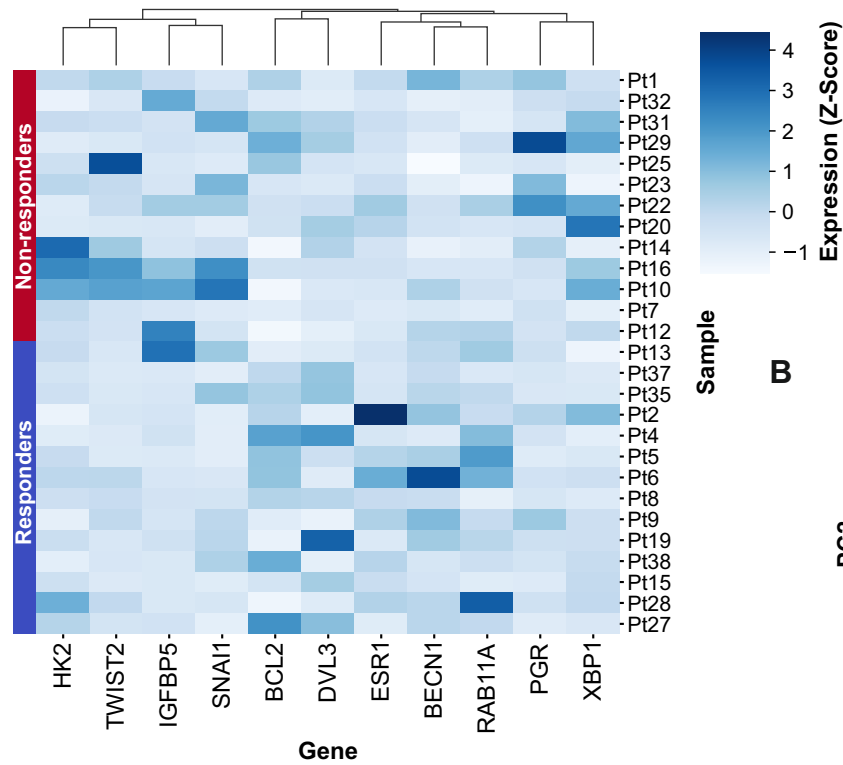


Figure S7

A



B

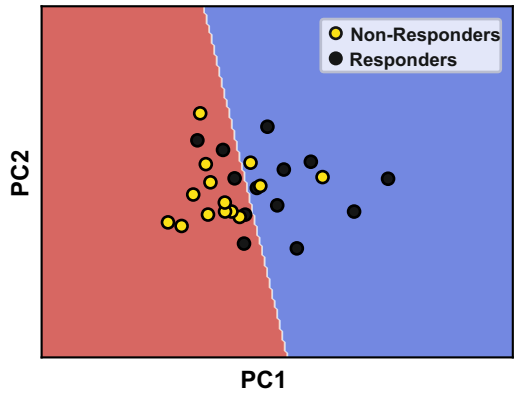


Figure S8



Melanoma cell line	Disease Stage	Mutation status of		
		BRAF	PTEN	N-RAS
1205Lu	Lung metastasis Xenograft	V600E	Mu/Hem Del	WT
451Lu	Lung metastasis Xenograft	V600E	WT	WT
WM1366	Primary (VGP)	WT	WT	WT
WM164	Metastasis	V600E	WT	WT
WM3268	Primary (VGP)	WT	ND	Q61K
WM3482	Metastasis	V600E	WT	WT
WM3682	Lymph node metastasis	WT	WT	Q61L
WM3734	Brain metastasis	V600E	ND	WT
WM3918	Metastasis	WT	ND	WT
WM47	Metastasis	V600E	ND	WT
WM793	Primary (VGP)	V600E	Mu/Hem Del	WT
WM88	Lymph node metastasis	V600E	WT	WT
WM858	Lymph node metastasis	V600E	WT	WT
WM9	Lymph node metastasis	V600E	Hem Del	WT
WM902B	Primary (VGP)	V600E	Hem Del	WT
WM983B	Lymph node metastasis	V600E	WT	WT
Other cell lines	Disease	Mutation status of		
		BRAF	PTEN	NRAS
K562	Chronic myelogenous leukemia	WT	WT	WT
NK-92	Non-Hodgkin's lymphoma	N/A	N/A	N/A