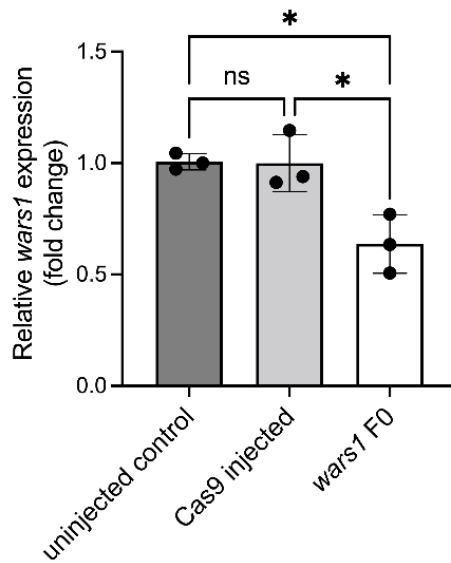
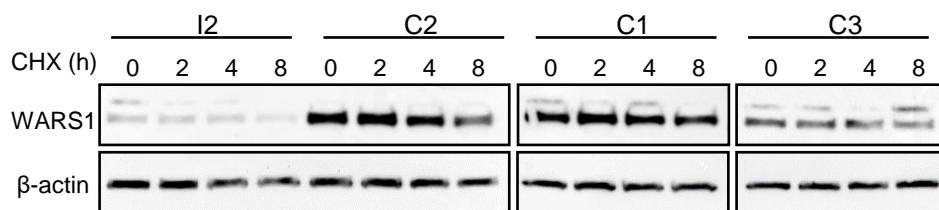


## Supplementary Figure 1



**Supplementary figure 1:** The wars1 F0 mutants show decreased wars1 expression. The expression levels were normalized to an 18S housekeeping gene and compared to the un.injected control group. Each dot represents one biological replicate. Error bars = mean  $\pm$  SD. One-way ANOVA with Tukey's multiple comparisons test: ns, not significant and \* $p < 0.05$ .

## Supplementary Figure 2



**Supplementary figure 2:** Immunoblot images from WARS1 cycloheximide (CHX) chase assay. WARS1 protein abundance in patient fibroblasts from individual 2 (I2) and three control fibroblast lines (C1, C2, C3) was determined 0, 2, 4 or 8 h after addition of 250  $\mu$ g/ml CHX.  $\beta$ -actin was used as loading control. Images are representative of  $n = 4$  replicates. Abbreviations: I2 = individual 2, C1-C3 = control 1-3, CHX = cycloheximide, WARS1 = tryptophanyl-tRNA-synthetase 1.