

## UNEDITED IMMUNOBLOTS

### Impaired atrial mitochondrial calcium handling in patients with atrial fibrillation

Julius Ryan D. Pronto, PhD<sup>1,2</sup>, Fleur E. Mason, PhD<sup>1,2</sup>, Eva A. Rog-Zielinska, PhD<sup>3</sup>, Funsho E. Fakuade, PhD<sup>1,2,4</sup>, Donata Bülow<sup>1</sup>, Marcell Tóth<sup>5</sup>, Khaled Machwart, MD<sup>6,7</sup>, Paulina Brandes<sup>1</sup>, Felix Wiedmann, MD<sup>2,8,9,10</sup>, Michael Kohlhaas, PhD<sup>7</sup>, Alexander Nickel, PhD<sup>7</sup>, Matthias Wolf<sup>11</sup>, Julian Mustroph, MD<sup>11,12</sup>, Kim-Chi Vu<sup>4,8,13</sup>, Sören Brandenburg, MD<sup>4,8,13</sup>, Tri Q. Do, PharmD<sup>14</sup>, Peter Joshua Siedler<sup>1,2</sup>, Katharina Ritzenhoff<sup>1,2</sup>, Zongqian Xue, MD<sup>10,15</sup>, Xiaobo Zhou, MD<sup>10,15</sup>, Stefanie Kestel<sup>1,2</sup>, Olga Dschun<sup>16</sup>, Oksana Kyshynska<sup>17</sup>, George Kensah, PhD<sup>2,17</sup>, Robyn T. Rebbeck, PhD<sup>18</sup>, Aschraf El-Essawi, MD<sup>2,17</sup>, Ahmad Fawad Jebran, MD<sup>2,17</sup>, Bernhard C. Danner, MD<sup>2,17</sup>, Hassina Baraki, MD<sup>2,17</sup>, Johann Schredelseker, PhD<sup>19,20</sup>, Ivan Bogeski, MD<sup>21</sup>, Bianca J.J.M. Brundel, PhD<sup>22</sup>, Stephan E. Lehnart, MD<sup>2,4,8,13</sup>, Constanze Bening, MD<sup>6,7,27</sup>, Ingo Kutschka, MD<sup>2,17</sup>, Felix Bremmer, MD<sup>16</sup>, Stefan Kallenberger, MD<sup>23,24</sup>, Silvio O. Rizzoli, PhD<sup>4,25</sup>, Björn C. Knollmann, MD<sup>14</sup>, Stefan Neef, MD<sup>11</sup>, Katrin Streckfuss-Bömeke, PhD<sup>5,26</sup>, Constanze Schmidt, MD<sup>2,8,9,10</sup>, Christoph Maack, MD<sup>7,#</sup>, Niels Voigt, MD<sup>1,2,4,#</sup>

<sup>1</sup> Institute of Pharmacology and Toxicology, University Medical Center Göttingen, Germany

<sup>2</sup> DZHK (German Centre for Cardiovascular Research), partner site Lower Saxony, Göttingen, Germany

<sup>3</sup> Institute for Experimental Cardiovascular Medicine (IEKM), University Heart Center and Faculty of Medicine, University of Freiburg, Germany

<sup>4</sup> Cluster of Excellence "Multiscale Bioimaging: From Molecular Machines to Networks of Excitable Cells" (MBExC), Georg-August-University Göttingen, Germany

<sup>5</sup> Institute of Pharmacology and Toxicology, Julius Maximilian University of Würzburg, Würzburg, Germany

<sup>6</sup> Department of Thoracic and Cardiovascular Surgery, University Clinic Würzburg, Germany

<sup>7</sup> Comprehensive Heart Failure Center Würzburg, University Clinic Würzburg, Germany

<sup>8</sup> Department of Cardiology and Pneumology, University Medical Center Göttingen, Germany

<sup>9</sup> Department of Cardiology, Angiology and Pneumology, University Hospital Heidelberg, Germany

<sup>10</sup> DZHK (German Centre for Cardiovascular Research), partner site Heidelberg/Mannheim, Heidelberg, Germany

<sup>11</sup> Department of Internal Medicine II, University Hospital Regensburg, Regensburg, Germany

<sup>12</sup> Department of Pharmacology, University of Regensburg, Germany

<sup>13</sup> Heart Research Center Göttingen, University Medical Center Göttingen, Göttingen, Germany

<sup>14</sup> Department of Medicine, Vanderbilt University Medical Center, Nashville, Tennessee, USA

<sup>15</sup> Department of Cardiology, Angiology, Hemostaseology and Medical Intensive Care, Medical Faculty Mannheim, Heidelberg University, Mannheim, Germany

<sup>16</sup> Institute of Pathology, University Medical Center Göttingen, Göttingen, Germany

<sup>17</sup> Department of Thoracic and Cardiovascular Surgery, University Medical Center Göttingen, Germany

- <sup>18</sup>Department of Biochemistry, Molecular Biology and Biophysics, University of Minnesota, Minneapolis, Minnesota, USA
- <sup>19</sup>Walther Straub Institute of Pharmacology and Toxicology, Faculty of Medicine, LMU Munich, Munich
- <sup>20</sup>DZHK (German Centre for Cardiovascular Research), Partner Site Munich Heart Alliance, Munich, Germany
- <sup>21</sup>Molecular Physiology, Institute of Cardiovascular Physiology, University Medical Center Göttingen, Germany.
- <sup>22</sup>Department of Physiology, Amsterdam UMC, Location Vrije Universiteit, Amsterdam Cardiovascular Sciences, Heart Failure and Arrhythmias, Amsterdam, The Netherlands.
- <sup>23</sup>Health Data Science Unit, University Hospital Heidelberg and Center for Quantitative Analysis of Molecular and Cellular Biosystems (BioQuant), University of Heidelberg, Heidelberg, Germany
- <sup>24</sup>National Center for Tumor Diseases, Department of Medical Oncology, Heidelberg University Hospital, Heidelberg, Germany
- <sup>25</sup>Department of Neuro- and Sensory Physiology, University Medical Center Göttingen, Germany
- <sup>26</sup>Medical Clinic I, Cardiology and Angiology, Justus-Liebig-University, Giessen
- <sup>27</sup>Current address: Rhein-Neckar Praxis, Eberbach, Germany

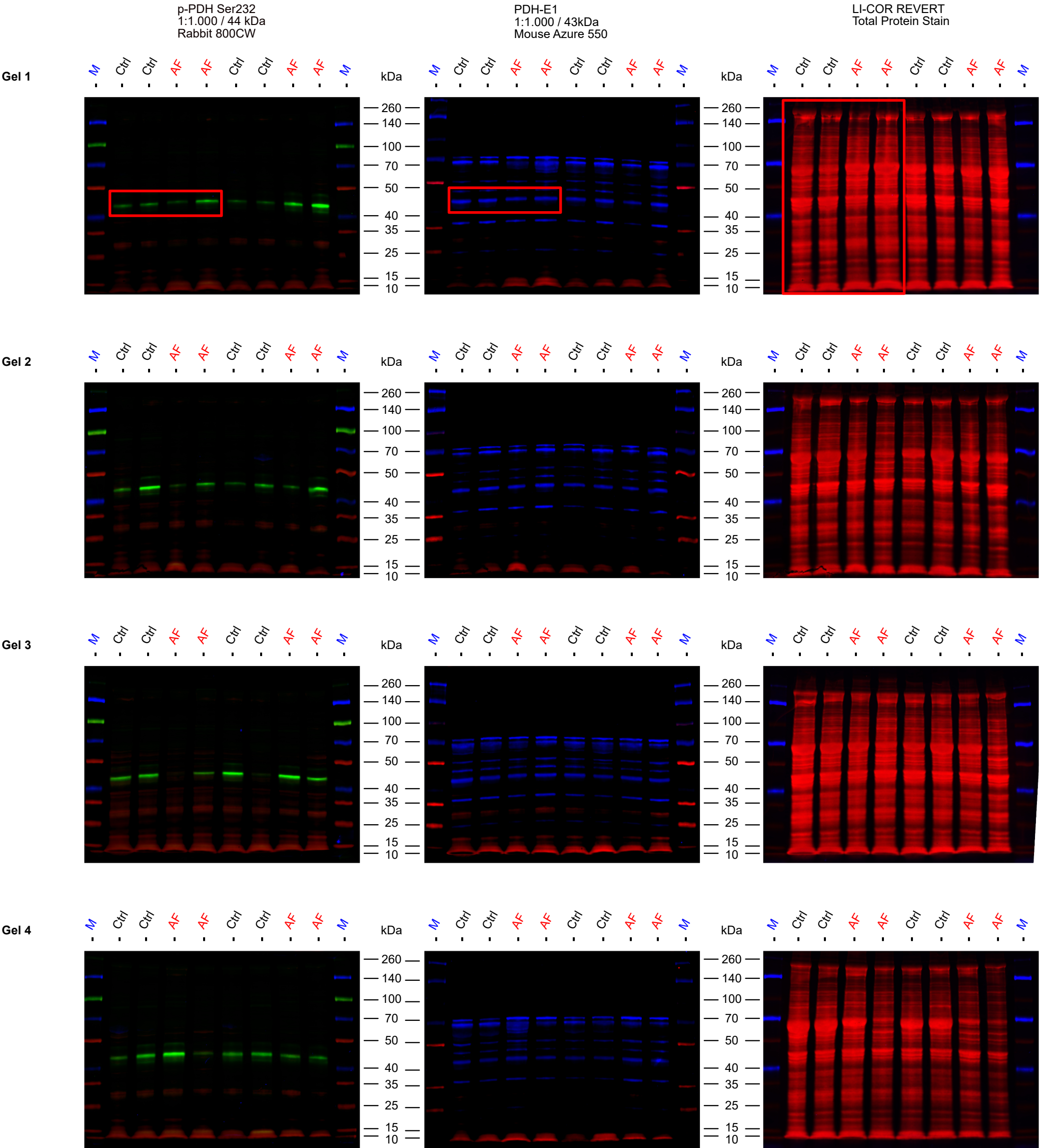
**#Co-corresponding Senior Authors:**

Niels Voigt, Institute of Pharmacology and Toxicology, University Medical Center Göttingen, Robert-Koch-Straße 40, 37075 Göttingen, Germany. Phone: 0049-551-39-65174, E-mail: [niels.voigt@med.uni-goettingen.de](mailto:niels.voigt@med.uni-goettingen.de). Twitter: @niels\_voigt

Christoph Maack, Comprehensive Heart Failure Center (CHFC), University Clinic Würzburg, Am Schwarzenberg 15, Haus A15, 97078 Würzburg, Germany. Phone: +49-931-201-46502, E-mail: [maack\\_c@ukw.de](mailto:maack_c@ukw.de). Twitter: @ChristophMaack

Full unedited gels for Figure S1

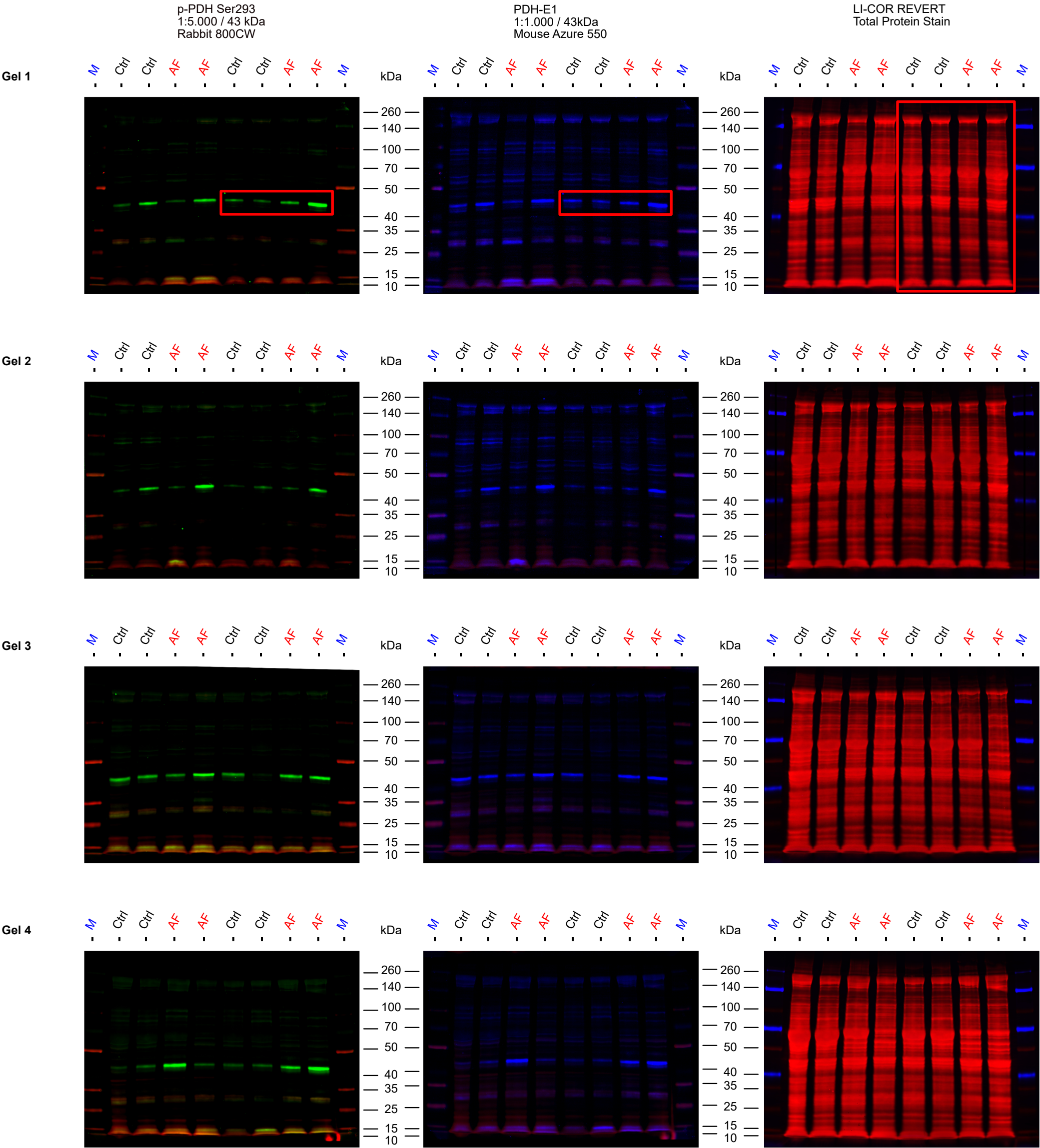
p-PDH Ser232  
PDH-E1  
LI-COR REVERT Total Protein Stain



M = Thermo Scientific™ Spectra™ Multicolor Broad Range Protein Ladder, 10 - 260 kDa  
Ctrl = Sinus rhythm  
AF = Persistent atrial fibrillation

Full unedited gels for Figure S1

p-PDH Ser293  
PDH-E1  
LI-COR REVERT Total Protein Stain

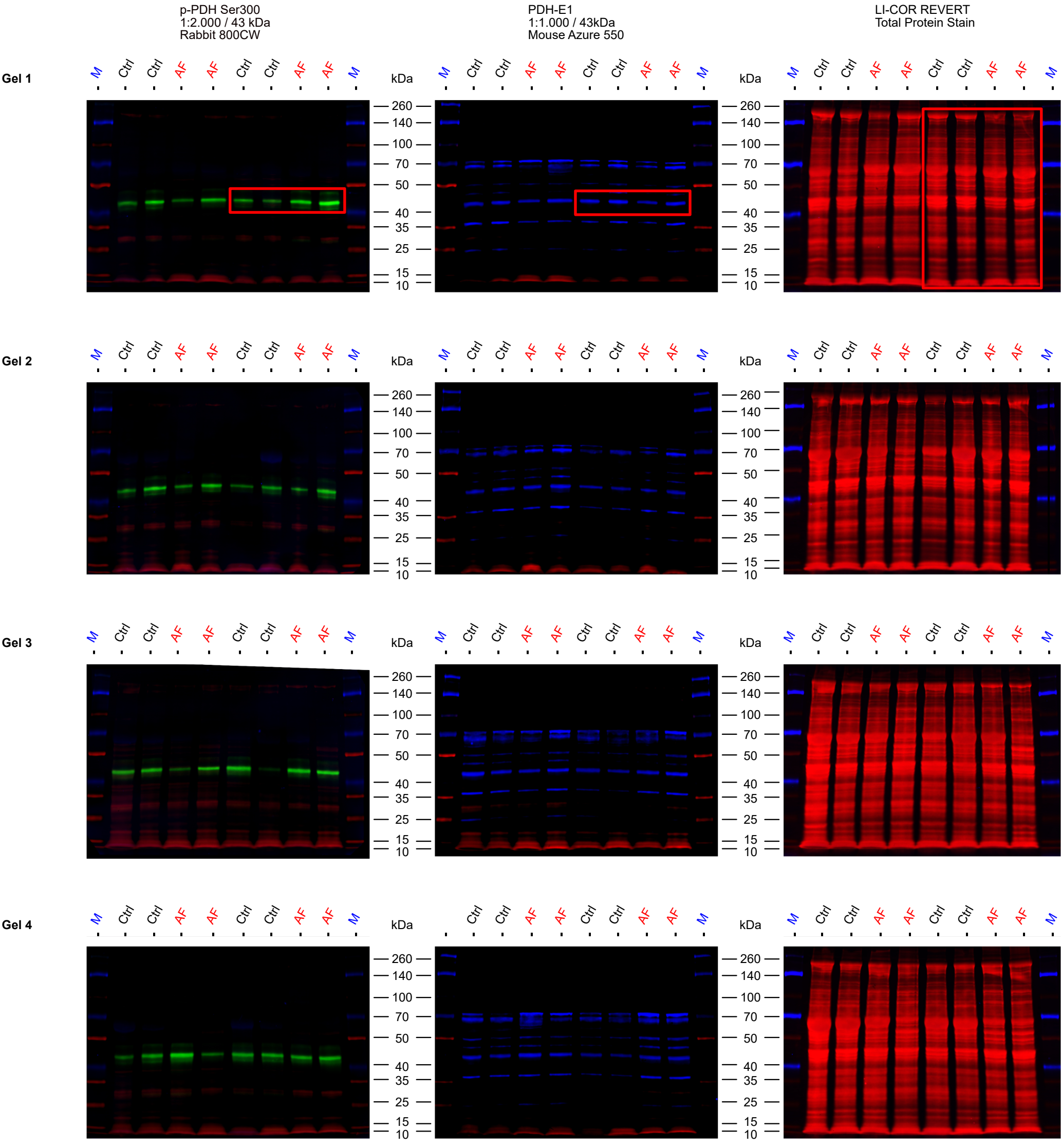


M = Thermo Scientific™ Spectra™ Multicolor Broad Range Protein Ladder, 10 - 260 kDa  
Ctrl = Sinus rhythm  
AF = Persistent atrial fibrillation



Full unedited gels for Figure S1

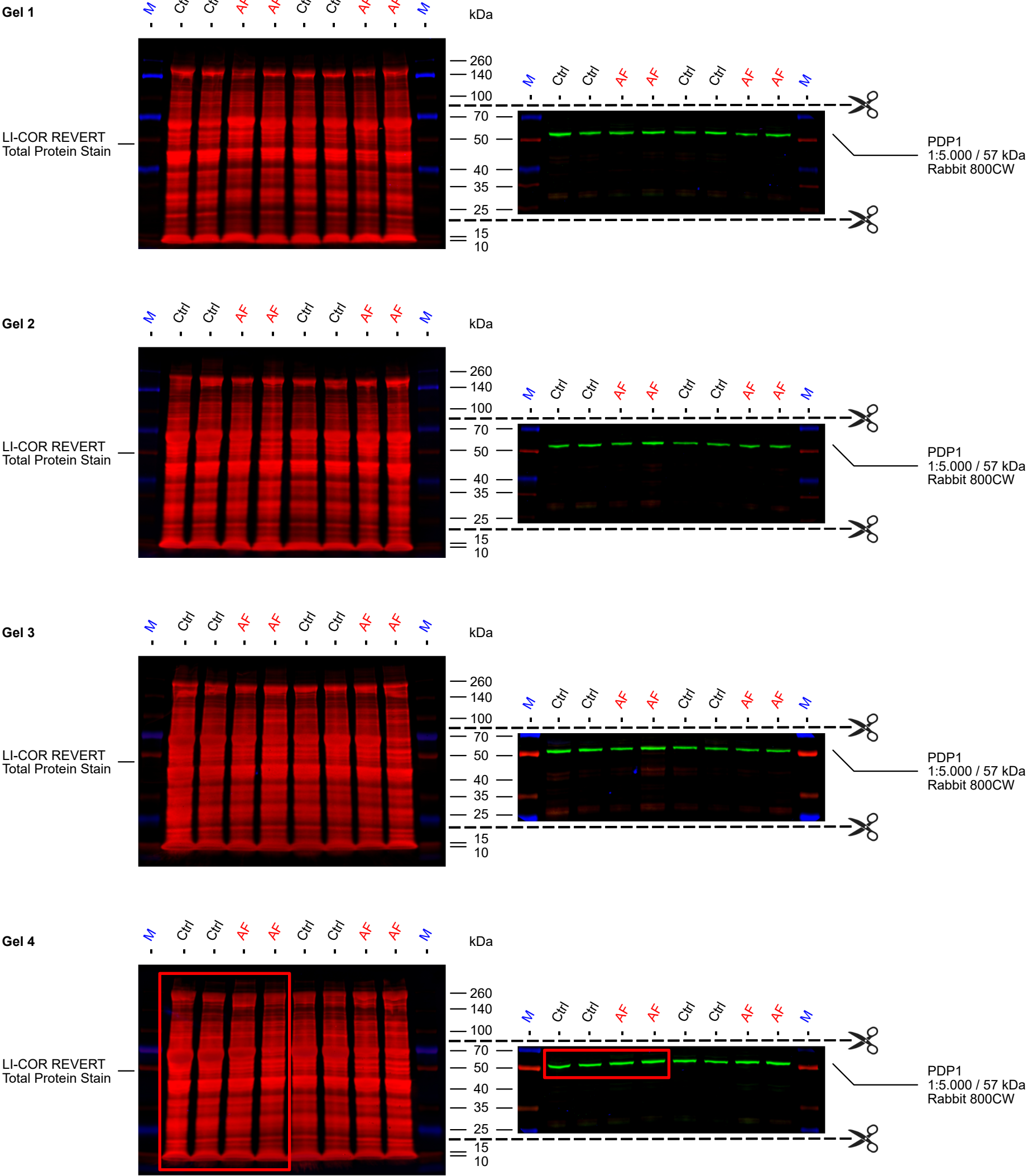
p-PDH Ser300  
PDH-E1  
LI-COR REVERT Total Protein Stain



M = Thermo Scientific™ Spectra™ Multicolor Broad Range Protein Ladder, 10 - 260 kDa  
Ctrl = Sinus rhythm  
AF = Persistent atrial fibrillation

Full unedited gels for Figure S1

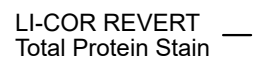
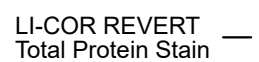
LI-COR REVERT Total Protein Stain  
PDP1



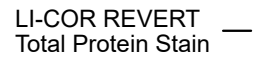
M = Thermo Scientific™ Spectra™ Multicolor Broad Range Protein Ladder, 10 - 260 kDa  
Ctrl = Sinus rhythm  
AF = Persistent atrial fibrillation

LI-COR REVERT Total Protein Stain  
PDK4

### Gel 1

LI-COR REVERT  
Total Protein Stain —

**Gel 4**

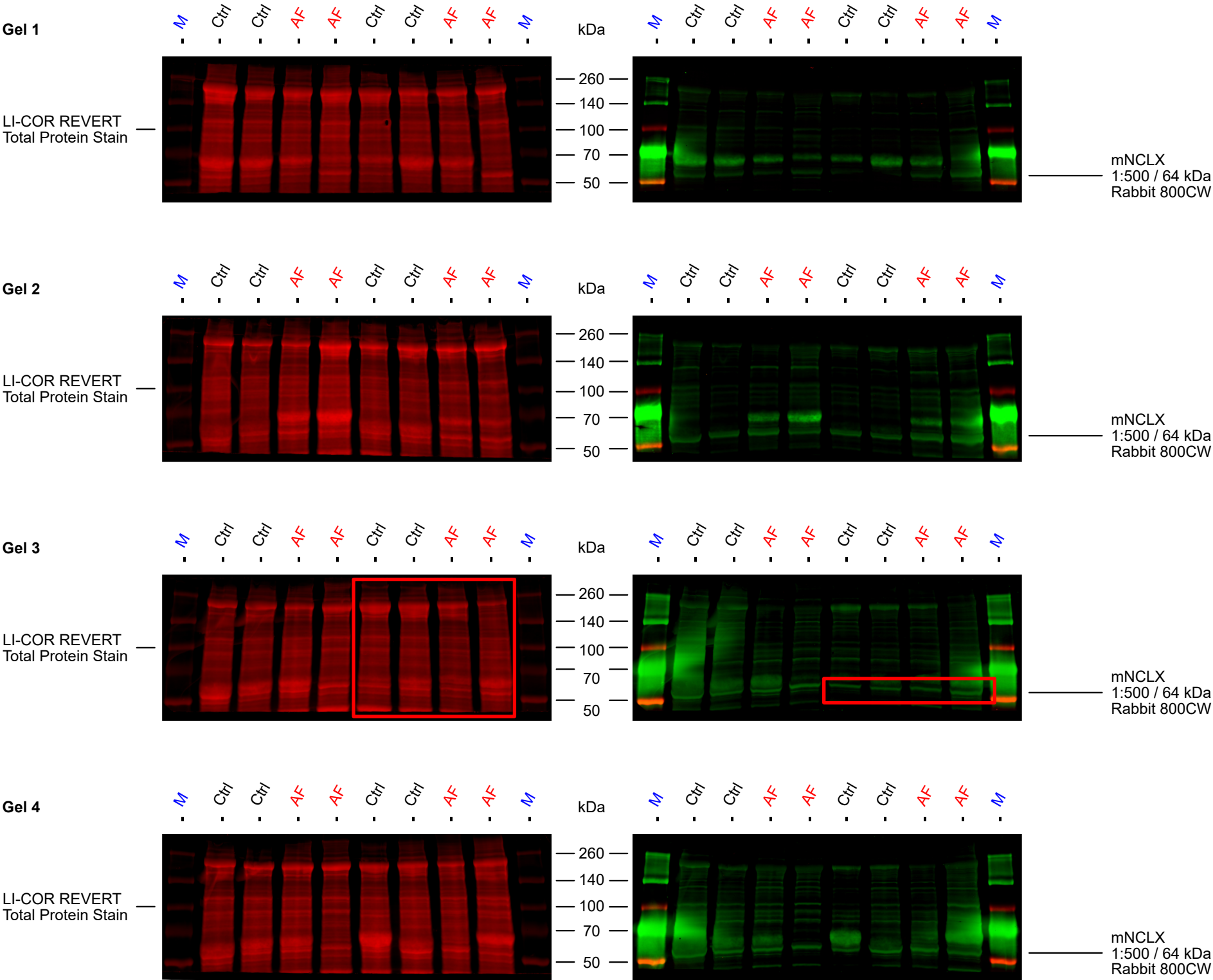


**AF** = Persistent atrial fibrillation



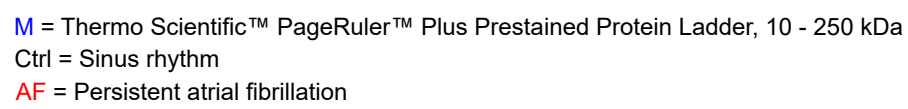
Full unedited gels for Figure S4

LI-COR REVERT Total Protein Stain  
mNCLX





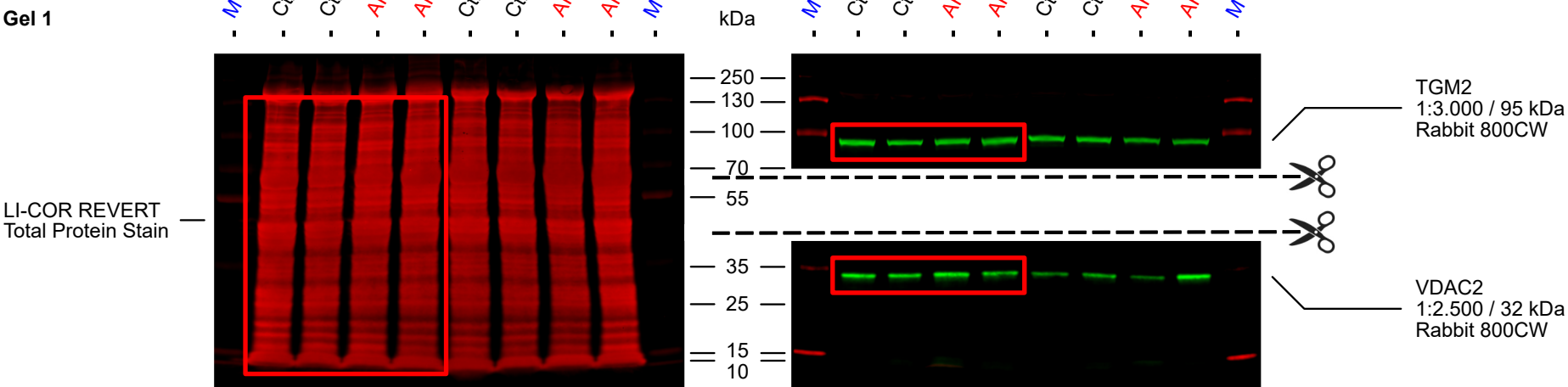
LI-COR REVERT Total Protein Stain  
GRP75  
VDAC1



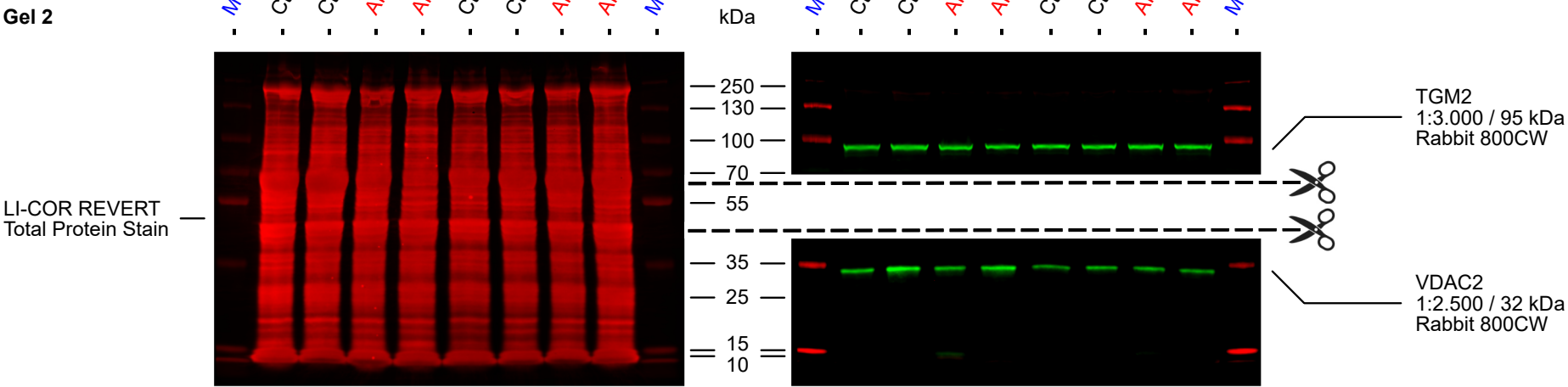
Full unedited gels for Figure S5

LI-COR REVERT Total Protein Stain  
TGM2  
VDAC2

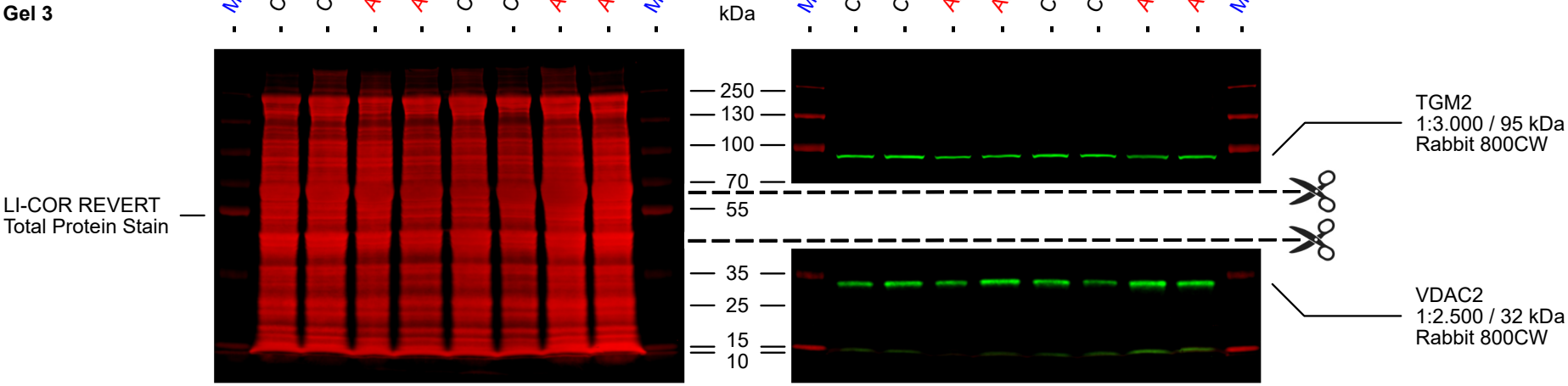
Gel 1



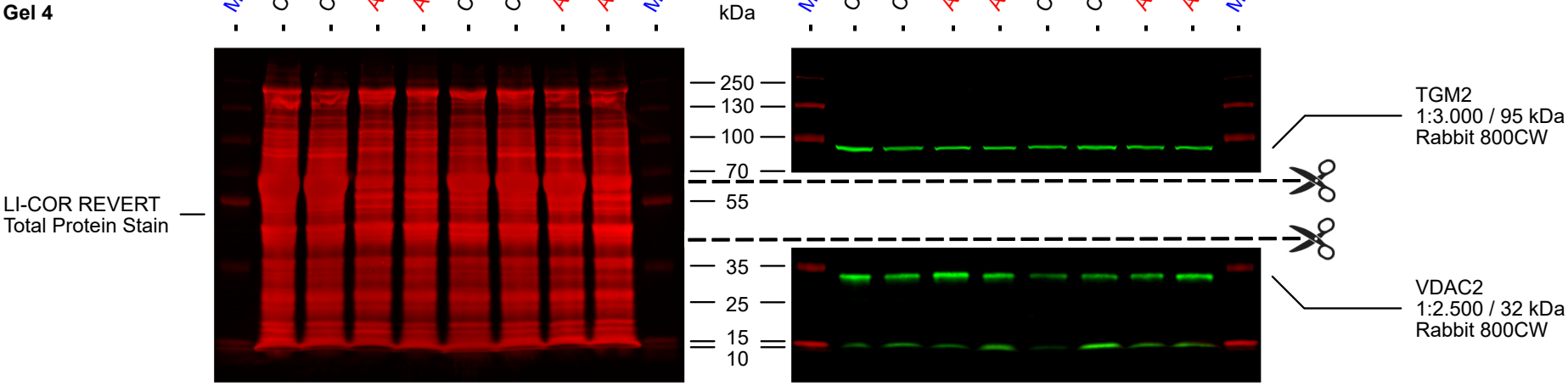
Gel 2



Gel 3



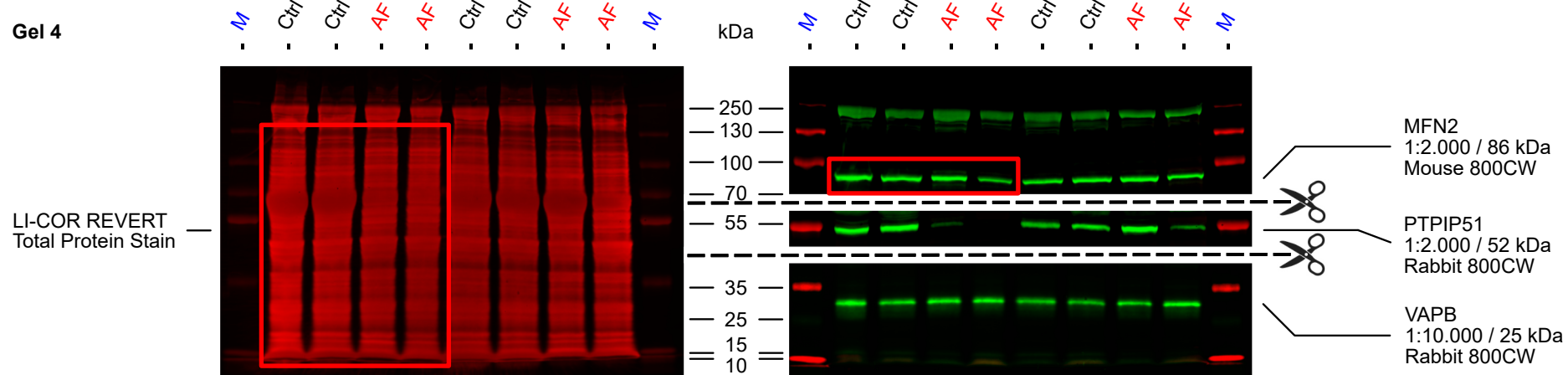
Gel 4



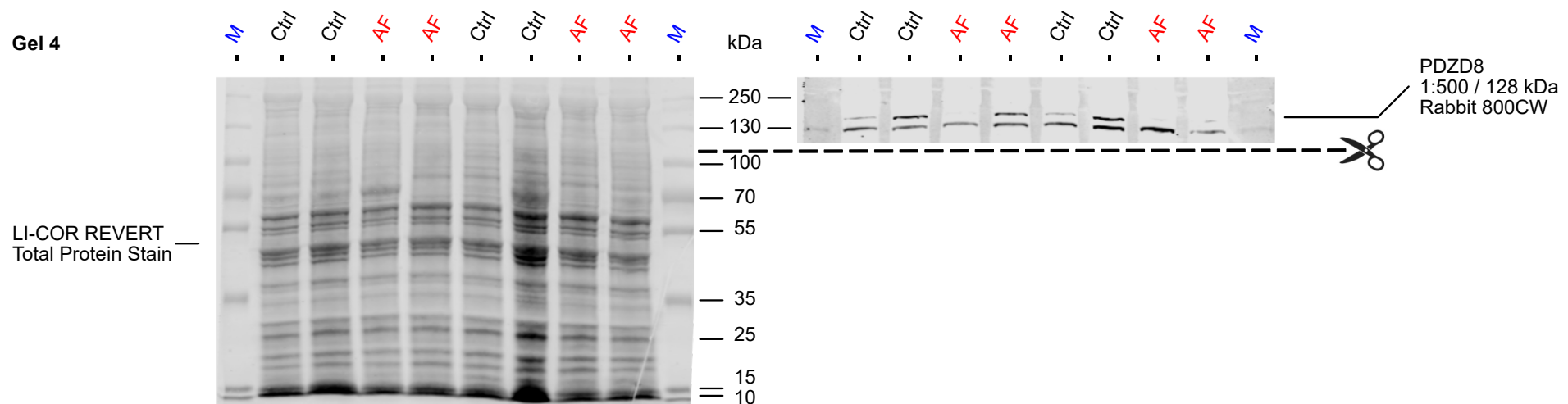
M = Thermo Scientific™ PageRuler™ Plus Prestained Protein Ladder, 10 - 250 kDa  
Ctrl = Sinus rhythm  
AF = Persistent atrial fibrillation

LI-COR REVERT Total Protein Stain  
MFN2  
PTPIP51  
VAPB

LI-COR REVERT Total Protein Stain  
MFN2  
PTPIP51  
VAPB

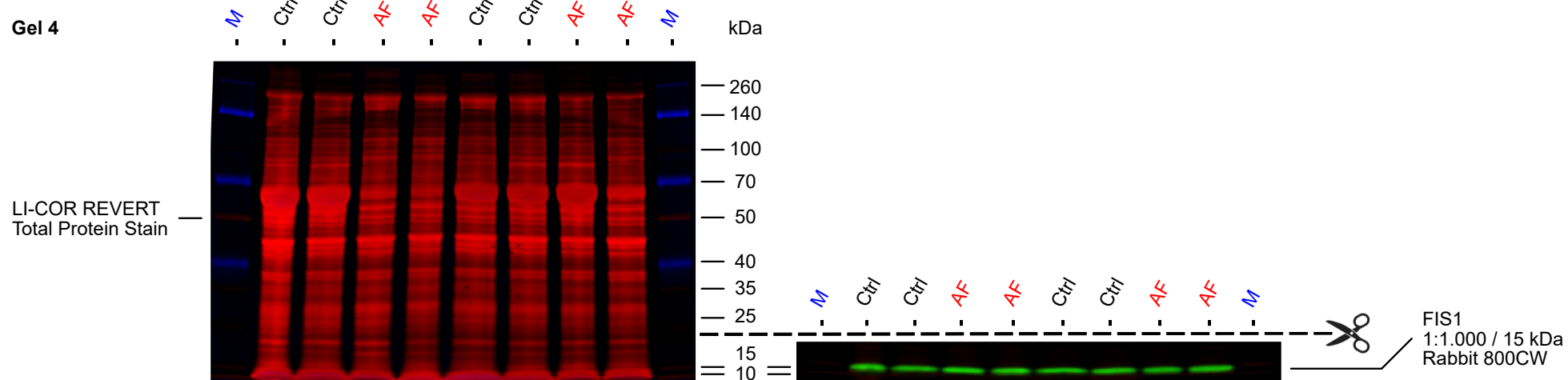


M = Thermo Scientific™ PageRuler™ Plus Prestained Protein Ladder, 10 - 250 kDa  
Ctrl = Sinus rhythm  
AF = Persistent atrial fibrillation

LI-COR REVERT Total Protein Stain  
PDZD8

M = Thermo Scientific™ PageRuler™ Plus Prestained Protein Ladder, 10 - 250 kDa  
Ctrl = Sinus rhythm  
AF = Persistent atrial fibrillation



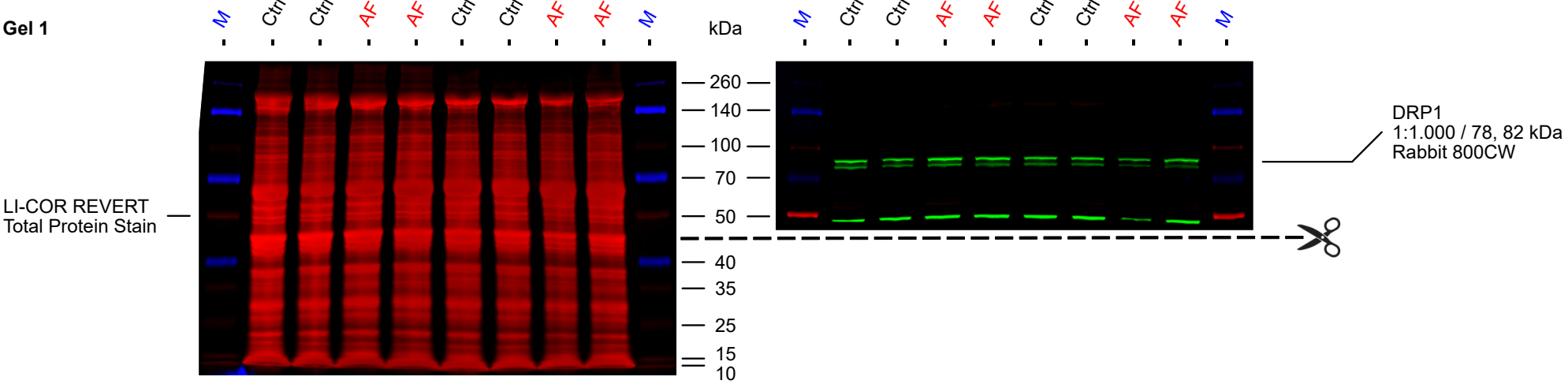
LI-COR REVERT Total Protein Stain  
FIS1

**AF** = Persistent atrial fibrillation

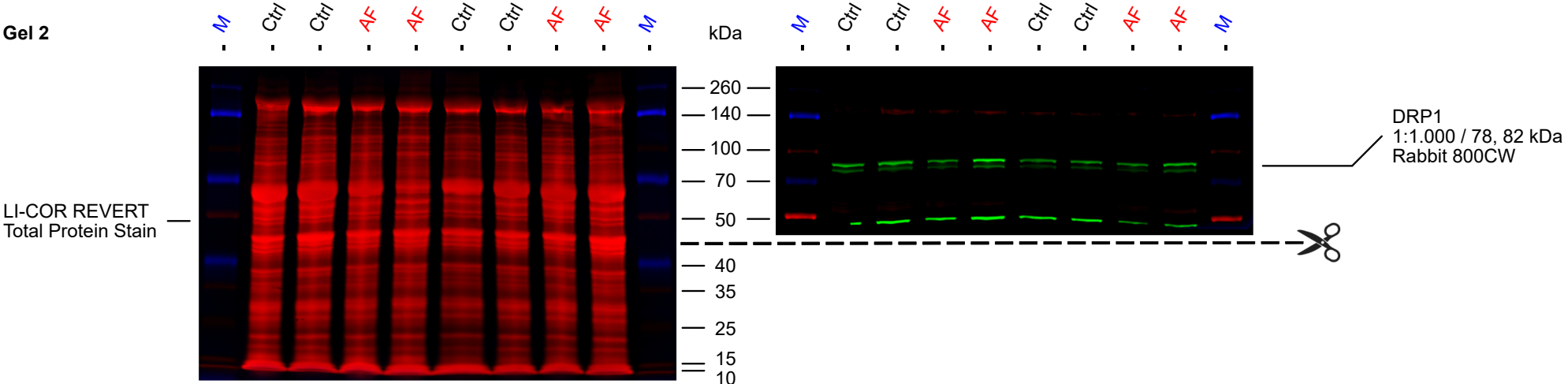
Full unedited gels for Figure S5

LI-COR REVERT Total Protein Stain  
DRP1

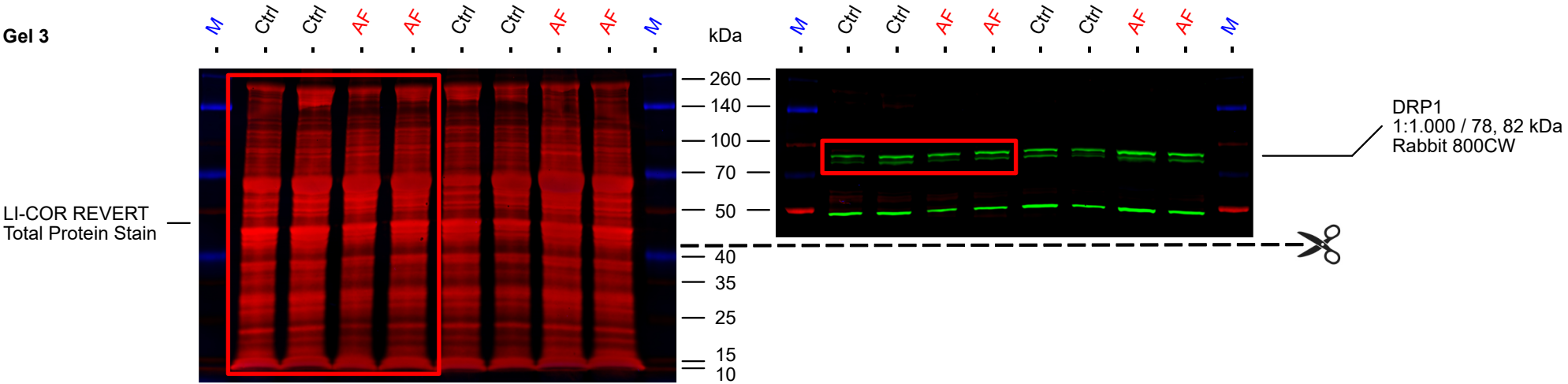
Gel 1



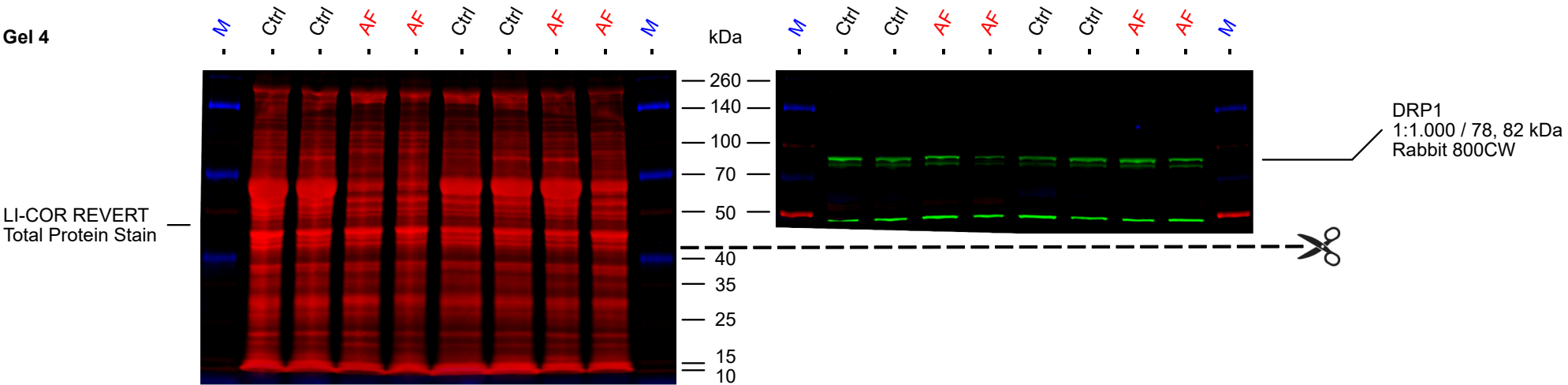
Gel 2



Gel 3



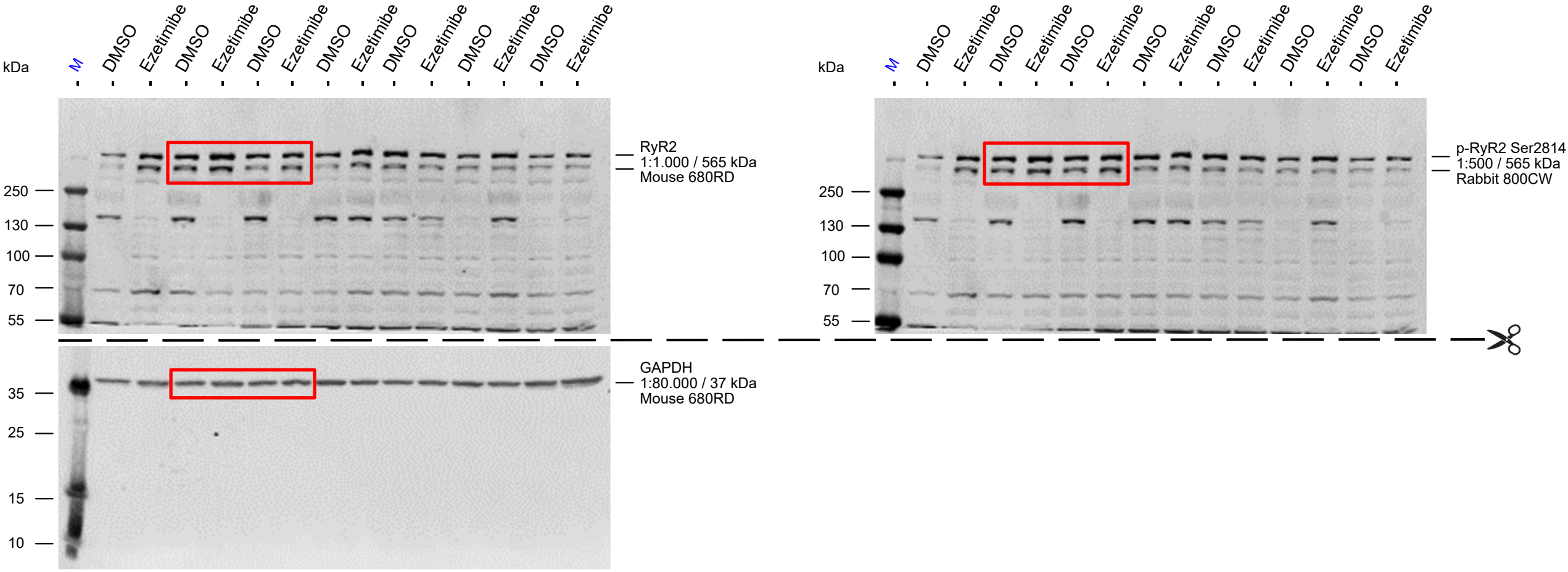
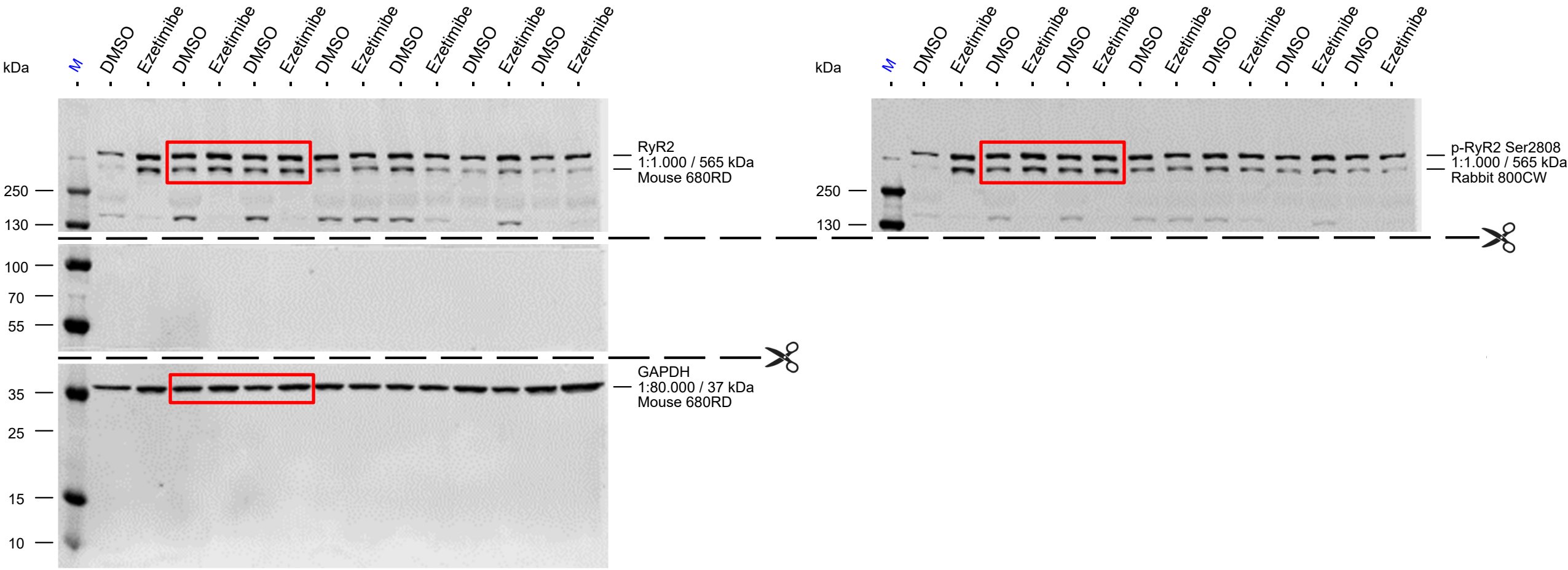
Gel 4



M = Thermo Scientific™ Spectra™ Multicolor Broad Range Protein Ladder, 10 - 260 kDa  
Ctrl = Sinus rhythm  
AF = Persistent atrial fibrillation

Full unedited gels for Figure S10

RyR2  
p-RyR2 Ser2808  
p-RyR2 Ser2814



M = Thermo Scientific™ PageRuler™ Plus Prestained Protein Ladder, 10 - 250 kDa